

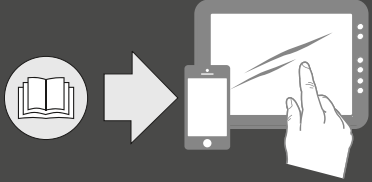


SpeechLine Digital Wireless

CHG 2W
SL Tablestand 133-S DW
SL Tablestand 153-S DW
SL Boundary 114-S DW

| | |
|---------------------------|--------------------|
| Quick Guide | Kort vejledning |
| Kurzanleitung | Pikaohje |
| Guide rapide | Γρήγορος οδηγός |
| Guía rápida | Kısa Kılavuz |
| Guía de inicio rápido | Краткая инструкция |
| Guia rápido | 快速指南 |
| Beknopte handleiding | 快速使用指南 |
| Krótka instrukcja obsługi | クイックガイド |
| Snabbguide | 퀵 가이드 |

SENNHEISER



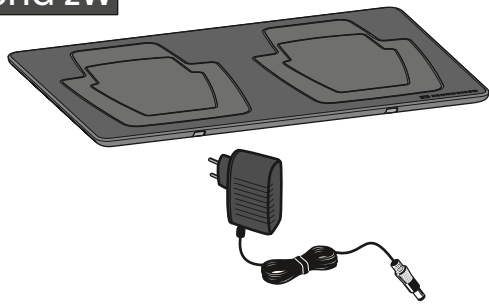
Sennheiser Documentation App



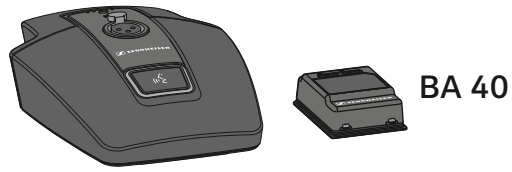
or online at
www.sennheiser.com/download
SpeechLine Digital Wireless

Sennheiser electronic GmbH & Co. KG
Am Labor 1, 30900 Wedemark, Germany
www.sennheiser.com
Printed in Germany, Publ. 11/20, 571386/A02

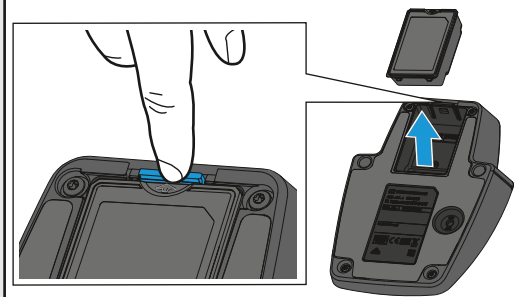
CHG 2W



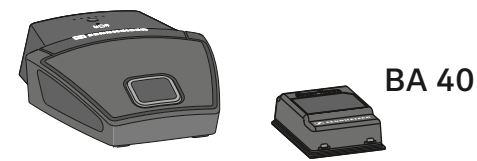
SL Tablestand 133-S DW



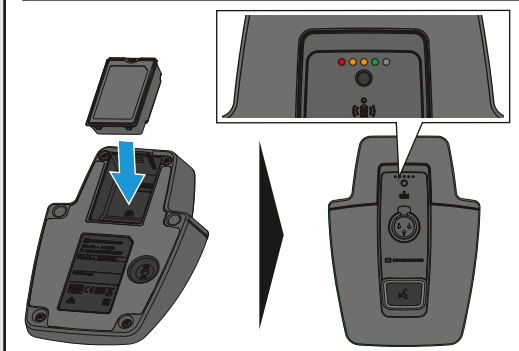
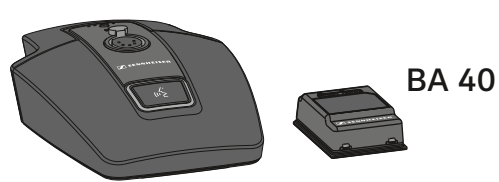
Battery



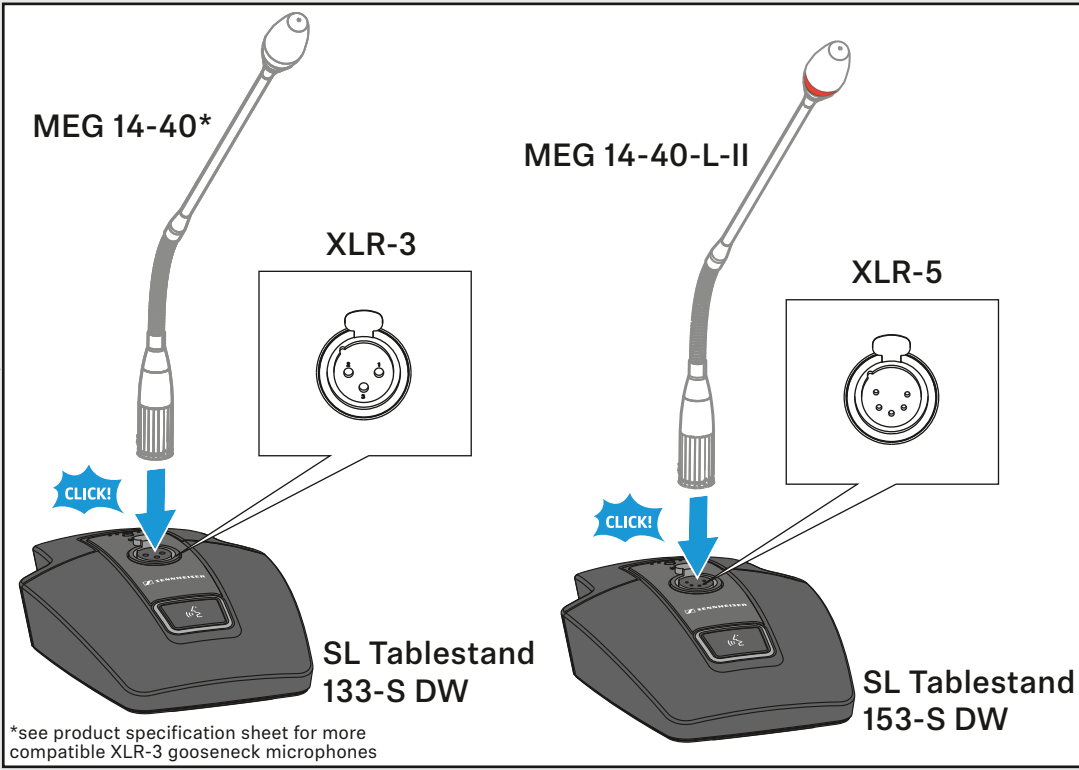
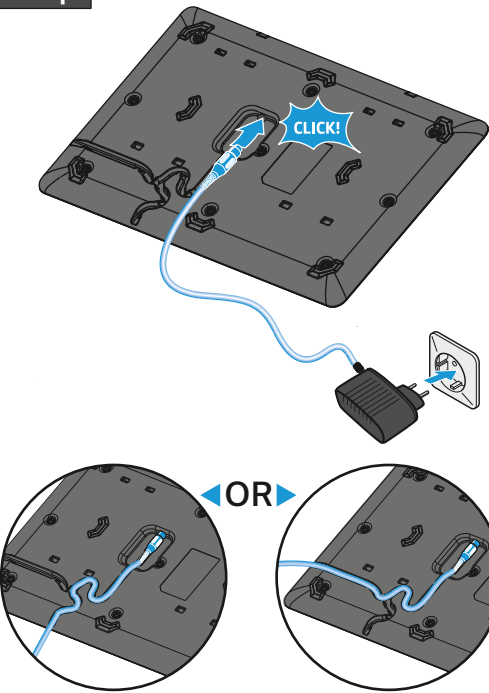
SL Boundary 114-S DW



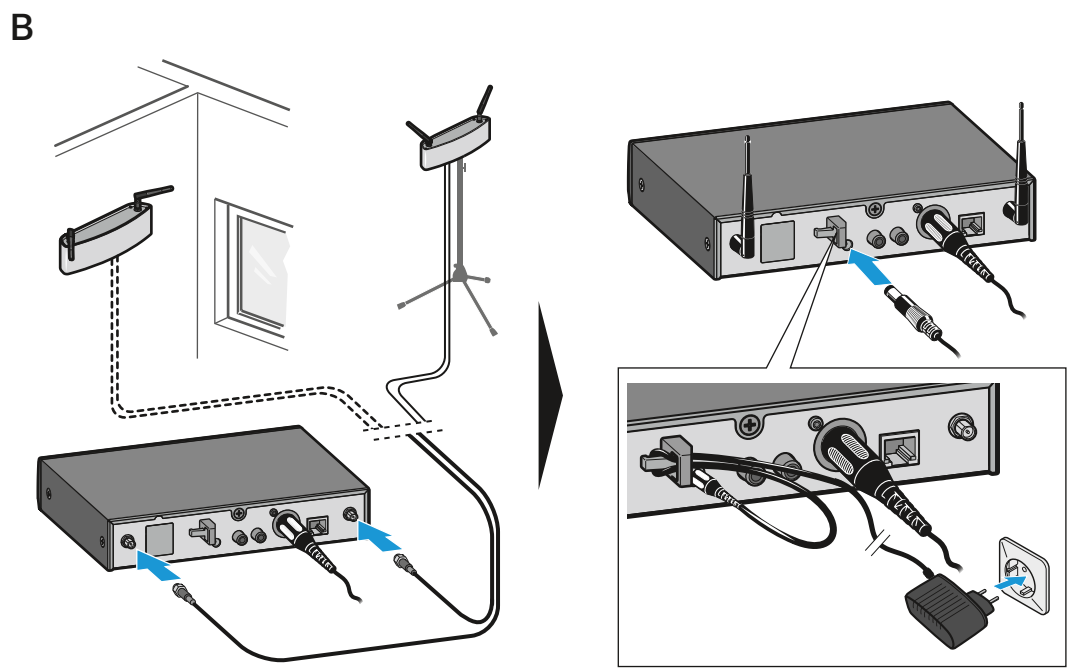
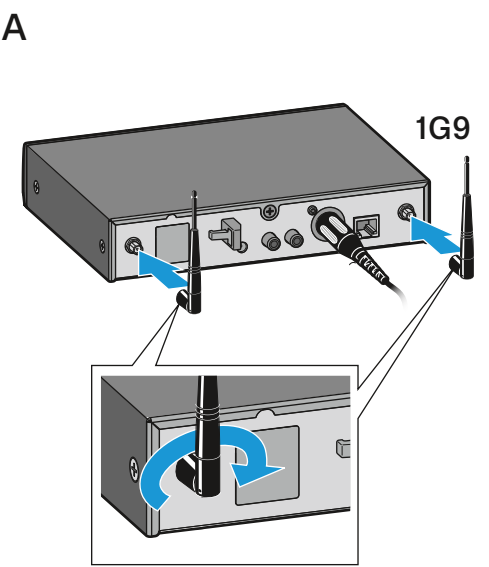
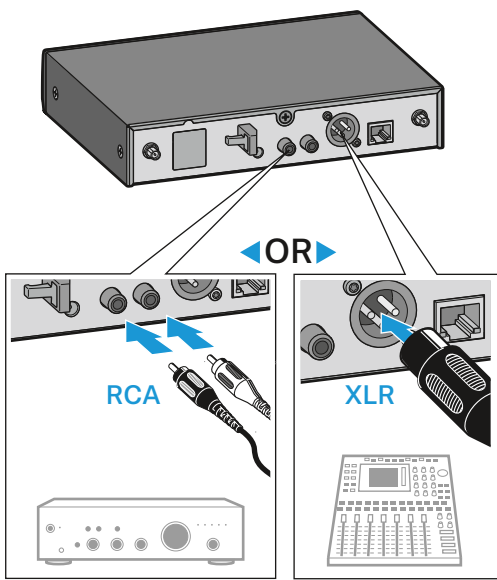
SL Tablestand 153-S DW



Setup

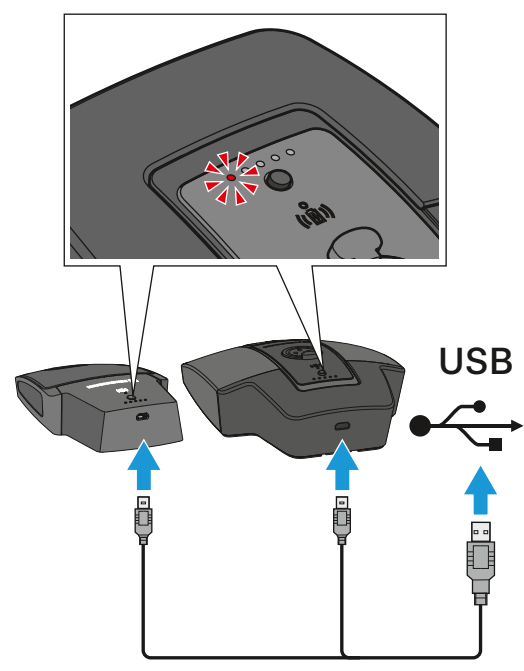


Setup



i for details see Application Note Antenna Mounting in the download section of www.sennheiser.com/speechline-dw

Charging



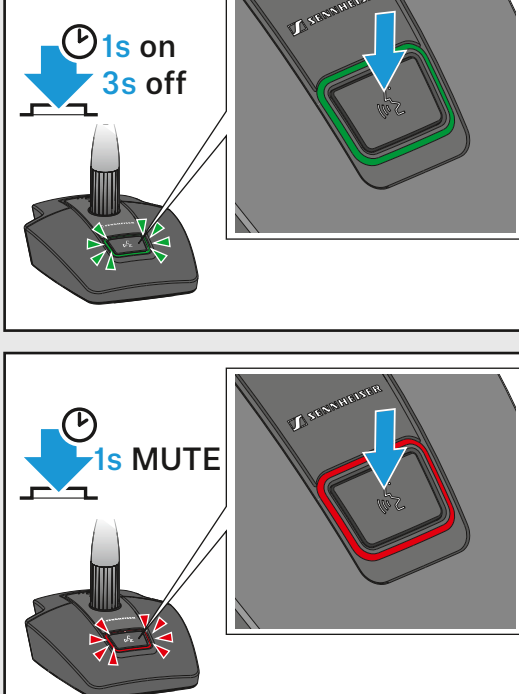
Operating time with BA 40 accupack

| | | |
|-------|----------|---------|
| ●●●●● | 100 % | 11:00 h |
| ●●●●○ | 80 % | XLR-3 |
| ●●●○● | 60 % | 10:00 h |
| ●●○●● | 40 % | XLR-5 |
| ●○●●● | 20 % | 13:00 h |
| ●●●●● | Low Batt | |

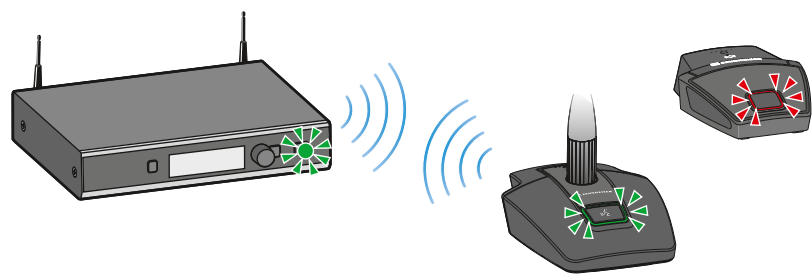
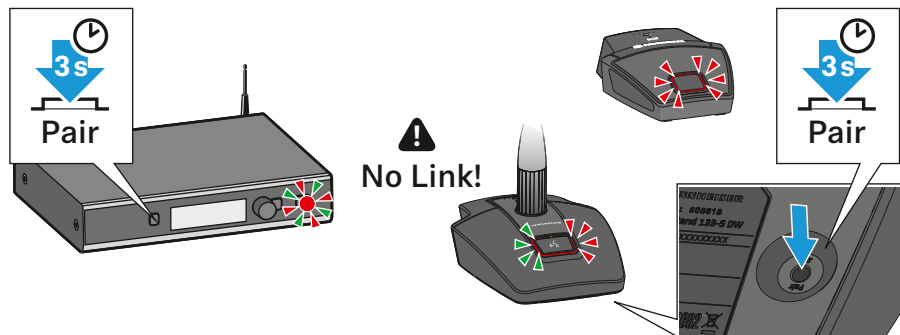
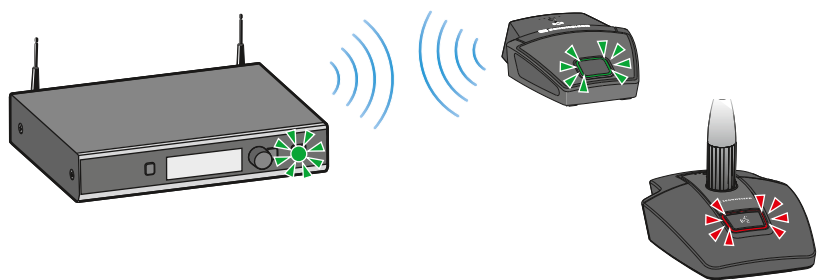
Charging time (until fully charged)

| | USB | |
|-------|------------|--------|
| XLR-3 | On 7:00 h | 5:00 h |
| XLR-3 | Off 5:30 h | 4:30 h |
| XLR-5 | On 7:30 h | 5:30 h |
| XLR-5 | Off 5:30 h | 4:30 h |
| | On 8:00 h | 5:00 h |
| | Off 6:00 h | 4:30 h |

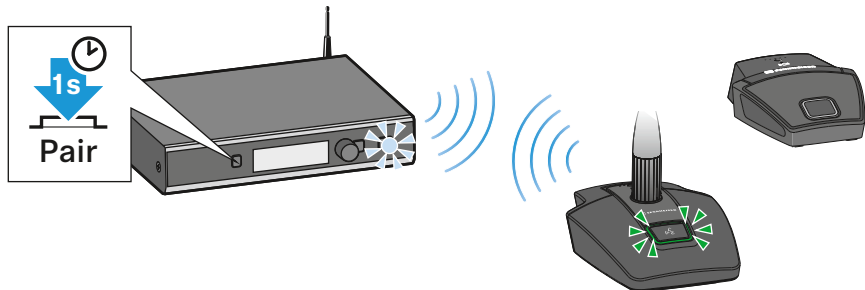
On/Off



Change device

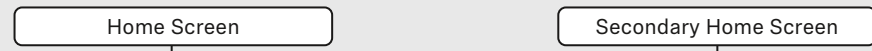


Identify

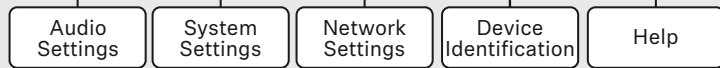


Menu

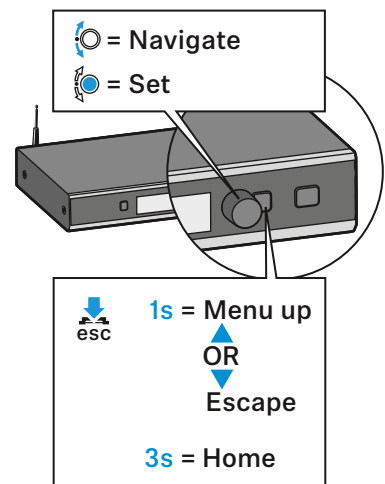
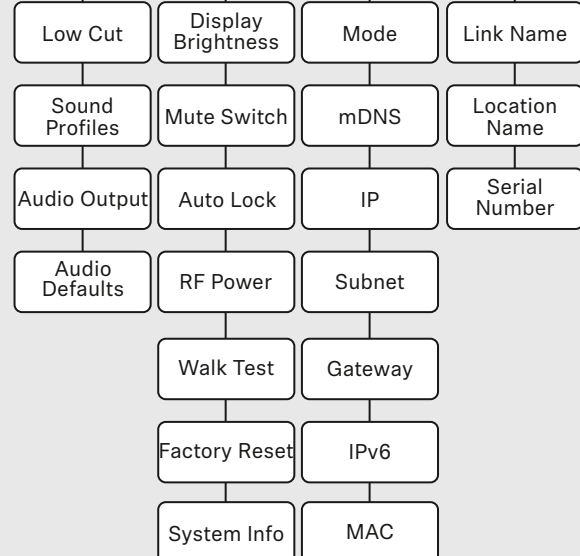
Home



Level 1



Level 1



EN: For more detailed information on SpeechLine Digital Wireless please refer to the product page at www.sennheiser.com/speechline-dw. You will find an interactive instruction manual for the entire SpeechLine Digital Wireless system in the download area of the product page.

DE: Detaillierte Informationen zu SpeechLine Digital Wireless finden Sie auf der Produktseite unter www.sennheiser.com/speechline-dw. Im Downloadbereich der Produktseite finden Sie die interaktive Bedienungsanleitung für die gesamte SpeechLine Digital Wireless-Serie.

FR: Pour des informations détaillées relatives à la série SpeechLine Digital Wireless, visitez la page produit sur www.sennheiser.com/speechline-dw. Vous trouverez une notice d'emploi interactive valable pour toute la série SpeechLine Digital Wireless sous la rubrique «Téléchargement» de la page produit.

IT: Informazioni dettagliate su SpeechLine Digital Wireless sono riportate nella pagina del prodotto all'indirizzo www.sennheiser.com/speechline-dw. Nella sezione Download della pagina del prodotto si trovano le istruzioni per l'uso interattive per l'intera serie SpeechLine Digital Wireless.

ES: Encontrará información detallada sobre SpeechLine Digital Wireless en la página del producto en www.sennheiser.com/speechline-dw. En el área de descargas de la página del producto encontrará las instrucciones de uso interactivas para toda la serie SpeechLine Digital Wireless.

PT: Estão disponíveis informações detalhadas sobre o SpeechLine Digital Wireless na página do produto em www.sennheiser.com/speechline-dw. Na área de download da página do produto está disponível o manual de instruções interativo referente a toda a série SpeechLine Digital Wireless.

NL: Op de productpagina onder www.sennheiser.com/speechline-dw staat meer informatie over de SpeechLine Digital Wireless. In het downloadgedeelte van de productpagina staat de interactieve gebruiksaanwijzing voor de gehele SpeechLine Digital Wireless-serie.

PL: Szczegółowe informacje dotyczące SpeechLine Digital Wireless są podane na stronie produktu www.sennheiser.com/speechline-dw. W obszarze pobierania plików strony produktu znajduje się interaktywna instrukcja obsługi dla całej serii SpeechLine Digital Wireless.

SE: Mer information om SpeechLine Digital Wireless finns på produktsidorna på www.sennheiser.com/speechline-dw. På produktsidan kan du även ladda ner en interaktiv bruksanvisning för hela serien SpeechLine Digital Wireless.

DK: Detaljerede informationer om SpeechLine Digital Wireless findes på produktsiden under www.sennheiser.com/speechline-dw. I produktsidens downloadområde finder du den interaktive betjeningsvejledning for hele SpeechLine Digital Wireless-serien.

FI: SpeechLine Digital Wireless -järjestelmää koskevia yksityiskohtaisia tietoja on tuotesivulla osoitteessa www.sennheiser.com/speechline-dw. Tuotteen latausalueella on koko SpeechLine Digital Wireless -sarjaa koskeva interaktiivinen käyttöohje.

GR: λεπτομερείς πληροφορίες σχετικά με το SpeechLine Digital Wireless θα βρείτε στην ιστοσελίδα προϊόντος www.sennheiser.com/speechline-dw. Στην περιοχή λήψης της ιστοσελίδας προϊόντος θα βρείτε το διαδραστικό εγχειρίδιο χειρισμού για όλη τη σειρά SpeechLine Digital Wireless.

TR: SpeechLine Digital Wireless için detaylı bilgileri www.sennheiser.com/speechline-dw altında ilgili ürün sayfasında bulabilirsiniz. SpeechLine Digital Wireless serisinin tamamı için ürün sayfasının indirme alanındaki etkileşimli kullanım kılavuzunu inceleyiniz.

RU: Подробные сведения о SpeechLine Digital Wireless можно найти на странице продукта на сайте www.sennheiser.com/speechline-dw. В разделе с материалами для загрузки на странице продукта находится интерактивное руководство для всей линейки устройств SpeechLine Digital Wireless.

ZH: 有关SpeechLine Digital Wireless的详细信息请参见www.sennheiser.com/speechline-dw的产品页面。在产品页面的下载区域还可下载整个SpeechLine Digital Wireless系列的交互式使用说明书。

JA: SpeechLine Digital Wirelessの詳細については www.sennheiser.com/speechline-dw で製品ページをご覧ください。製品ページのダウンロードエリアでは、SpeechLine Digital Wireless全シリーズのインタラクティブな取扱説明書があります。

KO: SpeechLine Digital Wireless에 관한 자세한 정보는 다음 제품 웹사이트를 참조하십시오. www.sennheiser.com/speechline-dw. 제품 웹사이트의 다운로드 영역에는 전체 SpeechLine Digital Wireless 시리즈의 대화식 사용 설명서가 있습니다.

